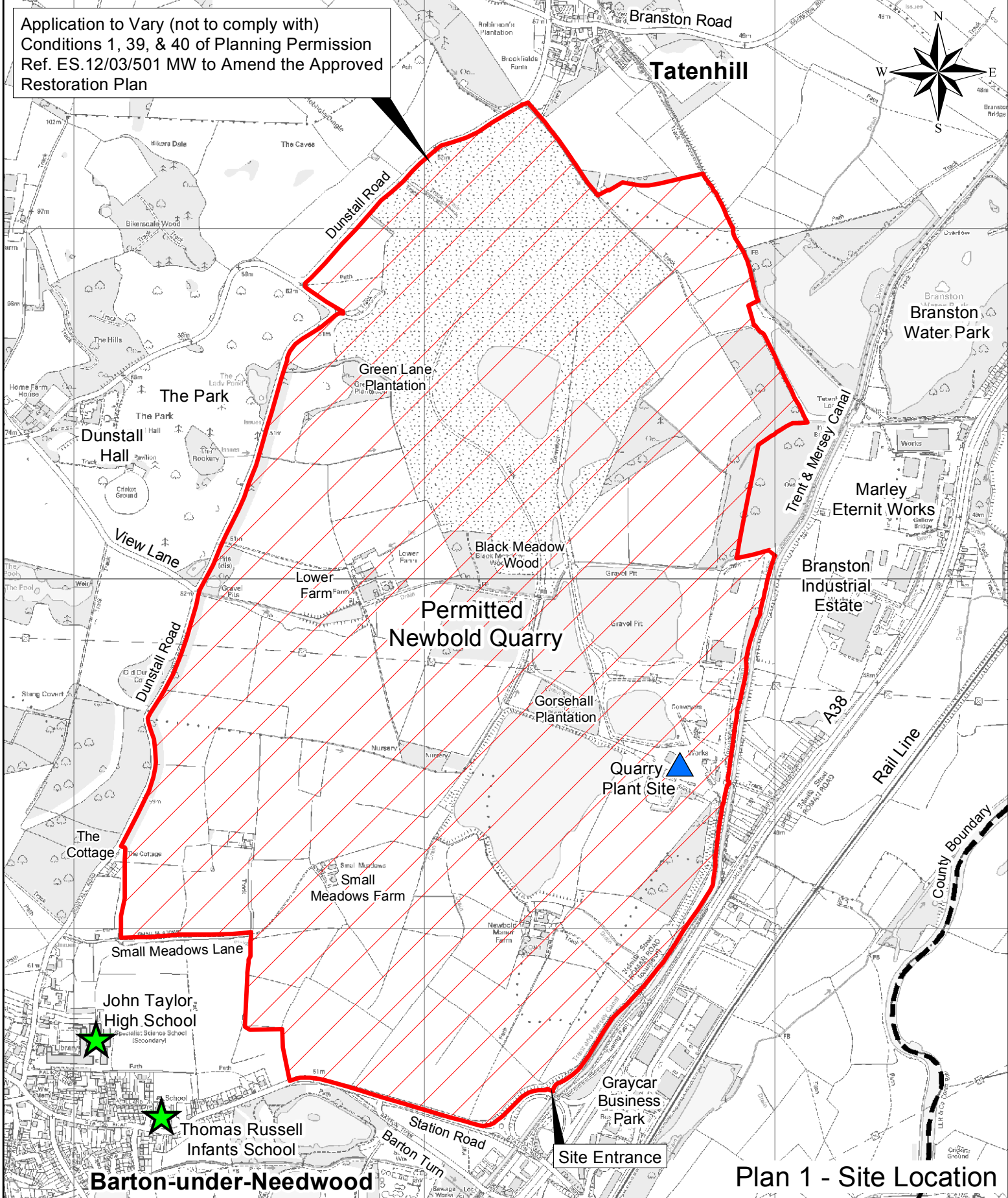



Application to Vary (not to comply with) Conditions 1, 39, & 40 of Planning Permission Ref. ES.12/03/501 MW to Amend the Approved Restoration Plan



Plan 1 - Site Location

© Crown Copyright and database rights 2019. Ordnance Survey 100019422. Produced by Staffordshire County Council, 2019. You are not permitted to copy, sub-license, distribute or sell any of this data to third parties in any form.

 <p>Staffordshire County Council</p> <p>Planning, Policy & Development Control, Staffordshire County Council, No.1 Staffordshire Place, Stafford, ST16 2LP. Telephone 0300 111 8000</p>	<p>Aggregate Industries UK limited. Application to vary (not to comply with) conditions 1, 39 and 40 of Planning Permission Ref. ES.12/03/501 MW to amend the approved Restoration Plan to facilitate the reinstatement of a dwellinghouse, outbuilding and access road at Small Meadows, Newbold Quarry, Lichfield Road, Barton-under-Needwood, Burton-on-Trent.</p>
--	---